

COVID-19 UPDATE 09/08/20 9:30 AM:

Fifteen new lab-confirmed cases and one new probable case in Perry County, MO since 09/04 update.
Thirty-six additional recoveries.

New cases 9/5: 5 lab-confirmed cases

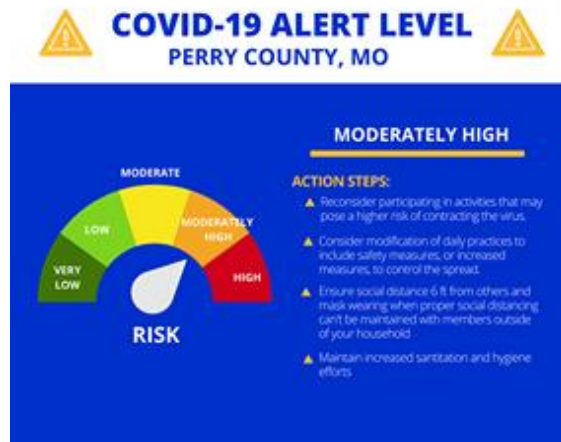
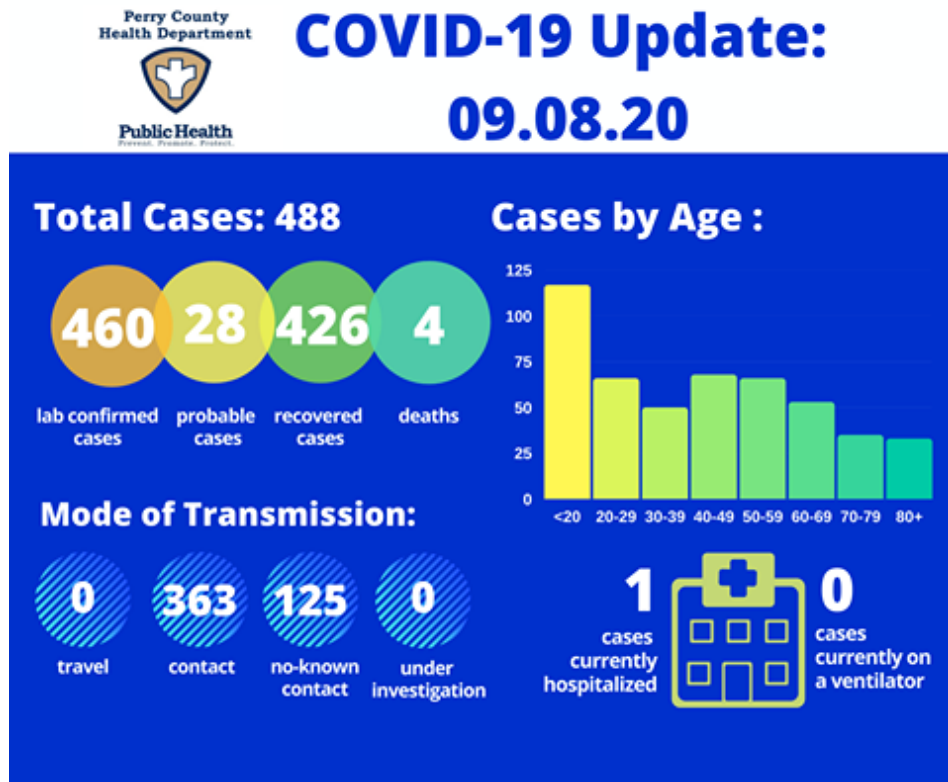
New cases 9/6: 4 lab-confirmed cases

New cases 9/7: 6 lab-confirmed cases and one probable case

Active Cases: 58

For the most up to date Missouri data, visit:

<https://health.mo.gov/.../heal.../communicable/novel-coronavirus>



Daily Change in Case Status:

