

COVID-19 UPDATE 08/26/20 6:30 PM:

Twenty new lab-confirmed cases and two new probable cases in Perry County, MO since 08/24 update.
Three additional recoveries.

*Please note, 3 additional recoveries, not 21 as originally posted. We copied and pasted from Monday's update and missed it. We're sorry for the confusion.

New cases 8/25: 14 lab-confirmed cases
New cases 8/26: 6 lab-confirmed cases and 2 probable cases
Active Cases: 60

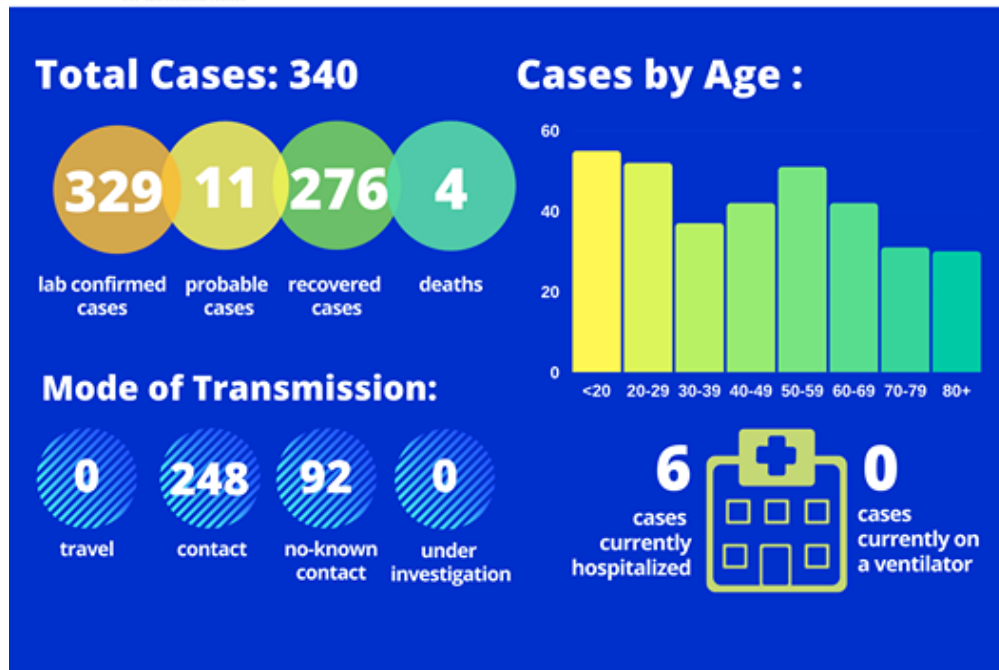
We are continuing to see an increase in the number of new cases. When time allows, outside of directly responding to COVID-19 through contact investigations, we are continuing to analyze data and the information we have available to determine whether increases we are seeing are due to outbreaks we are actively monitoring or larger community spread. Until we have been able to accurately assess all of the new incoming information, there will not be an update to our risk level meter as we want to assure an accurate representation of where we are at as a community. Thank you for your continued patience and support as we respond to COVID-19.

For the most up to date Missouri data, visit:

<https://health.mo.gov/.../heal.../communicable/novel-coronavirus>



COVID-19 Update: 08.26.20



Daily Change in Case Status:

